


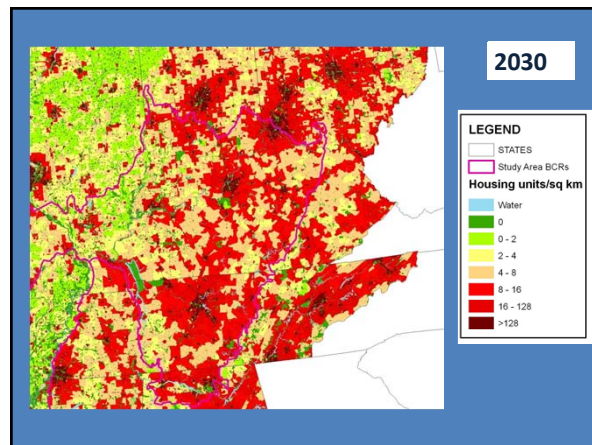
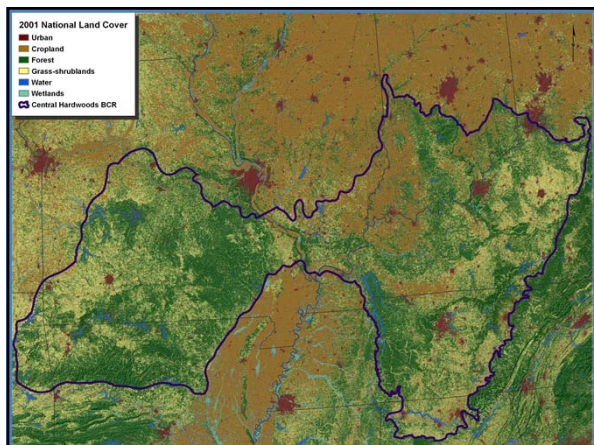
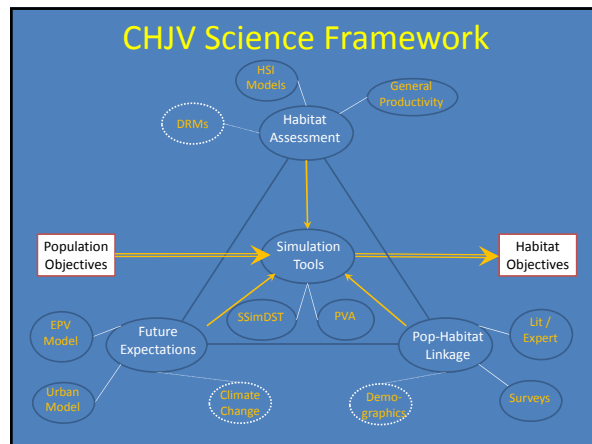


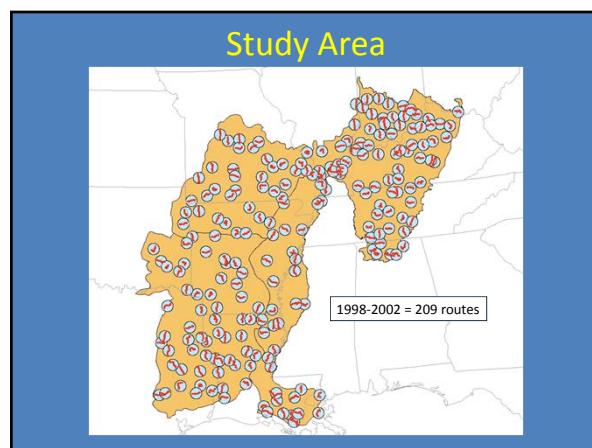
## Assessing the Impact of Projected Housing Density on High Priority Forest Birds

D. T. Jones-Farrand, A. M. Pidgeon,  
F. R. Thompson, & J. A. Fitzgerald



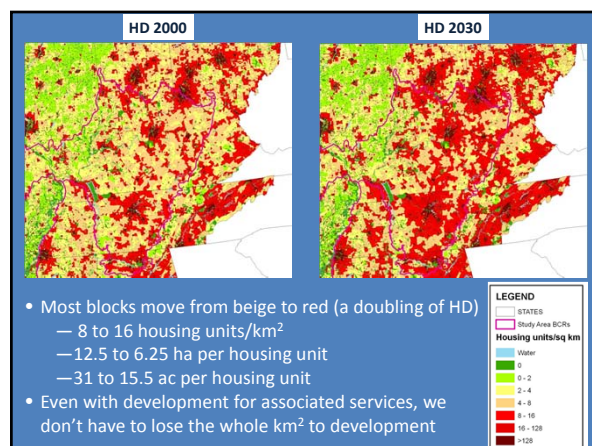
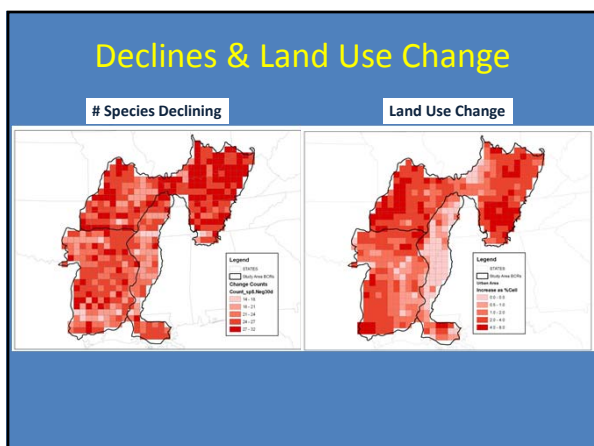
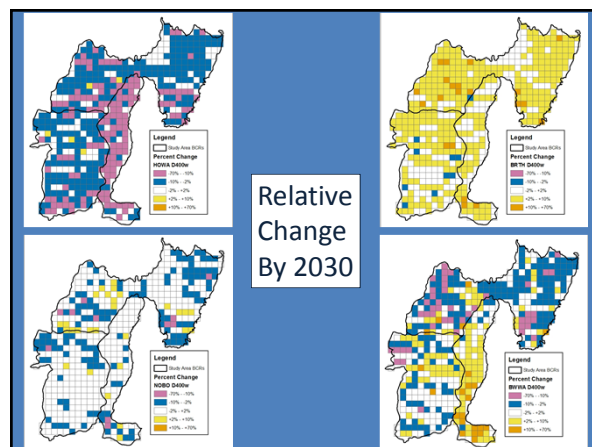
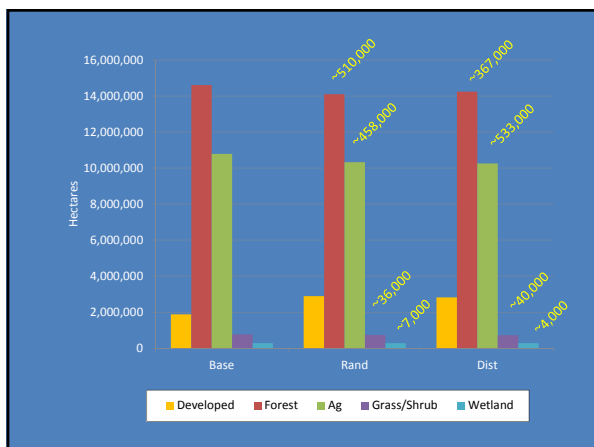
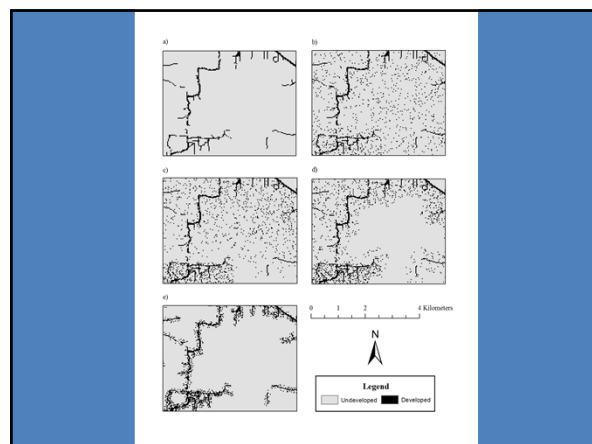
- ### Purpose & Objectives
- Purpose
    - Assess the impact of predicted growth in Housing Density (HD) on priority forest bird populations
  - Objectives
    - Model bird abundance as a function of HD (2000) and land cover (2001)
    - Project land cover change as a function of HD
    - Estimate change in bird populations 2000-2030

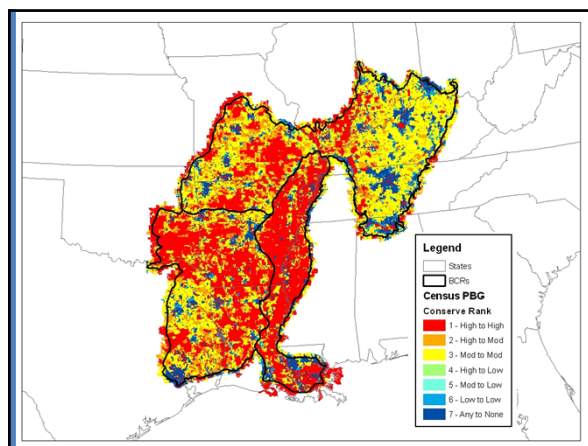
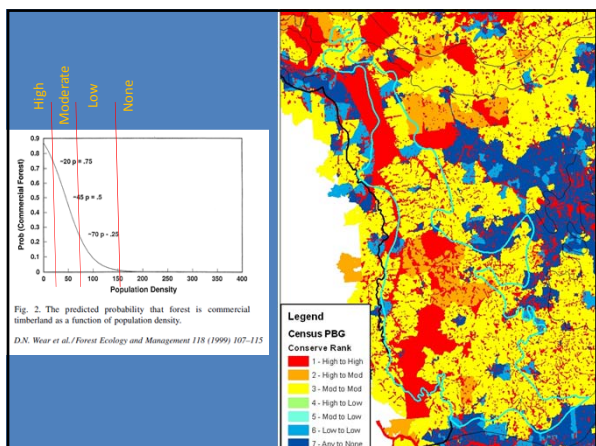


### Focal Species

ACFL	CACH	MIKI	SWWA
AMWO	CERW	NOBO	STKI
BACS	CHSW	NOPA	WEVI
BAWW	CWWI	OROR	WEWA
BEVI	EAWP	PABU	WOTH
BEWR	FISP	PIWO	WPWI
BGGN	GCFL	PRAW	YBCH
BHNU	HOWA	PROW	YBCU
BRTH	KEWA	RCWO	YTVI
BWWA	LOWA	RHWO	YTWA

Poor Representation      Poor Fit for Global Model





### Estimated Opportunity Loss

	Savanna & Barrens	Glade/Savanna Complex	Oak Open Woodlands	Pine/Bluestem Open Woodlands	Total
Hectares Lost	15,088.1	9,638.6	75,247.0	5,107.2	105,080.9
Acres Lost	37,267.5	23,807.4	185,860.2	12,614.7	259,549.8

	Oak Closed Woodland	Pine-Oak Closed Woodland	Mesic Forest	Floodplain Forest	Total
Hectares Lost	140,957.1	26,666.8	177,489.7	44,720.0	389,833.5
Acres Lost	348,164.0	65,866.9	438,399.5	110,458.4	962,888.8

- ### Research Questions
- Finer-scale Habitat Relationships
    - Forest & grassland types
  - Identify Thresholds
  - Other Growth Scenarios
    - Change in rates or more concentrated
  - NC State process for the SE US
    - Gigaopolis software
  - Impacts on population viability
    - CHJV population viability model

- ### Acknowledgements
- Funding support
    - Tennessee Wildlife Resources Agency
    - Missouri Department of Conservation
    - Kentucky Division of Fish & Wildlife Resources
    - Arkansas State Game & Fish Commission
    - US Forest Service, Land Between the Lakes
  - In Kind support
    - Northern Research Station, US Forest Service
    - American Bird Conservancy
    - Department of Forest & Wildlife Ecology, University of Wisconsin – Madison
  - Questions?
    - [David.Jones-Farrand@FWS.Gov](mailto:David.Jones-Farrand@FWS.Gov)
    - 573-875-5341 ext. 226