

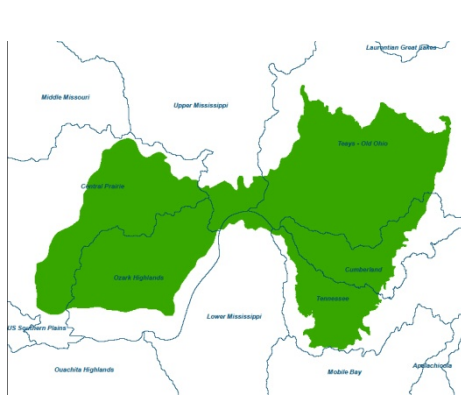
2012-10-04 HO-2c Boundary Change Map

Requesting: that the GCPO LCC sponsor request that the Central Hardwood Joint Venture areas be put entirely into GCPO LCC boundary

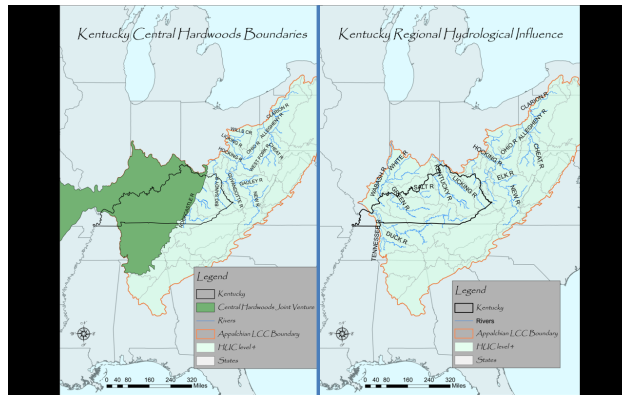
Summary:

- (a) CHJV requesting the entire Central Hardwood Bird Conservation Region (CHBCR) be put, in its entirety, into the GCPO LCC boundary (i.e., moving the ILP (=Interior Low Plateaus ~the ‘eastern lobe’ of the CHBCR) from the AppLCC which would redefine AppLCC to ~mirror that of the AMJV Region as they GCPO would then take over much of AppLCC Eastern areas);
- (b) follows the National LCC/DOI Guidance on how to propose a boundary change (i.e., a decision between affected LCCs);
 - Criteria #1. “avoid fragmentation of Bird Conservations (BCRs) as much as possible,” [by moving the Interior Low Plateaus out of the AppLCC and into GCPO];
 - Criteria #2. “retain aquatic and terrestrial homogeneity as much as possible,” [noting “others on the aquatic side associated with CHJV partner agencies feel associated with GCPO LCC makes more sense to them biologically and ecologically” (and)
 - Criteria #3. “be mindful of existing nationally significant partnerships,” [point out the long working history with the other JVs overlapping the GCPO LCC than the AppLCC “with whom (CHVJ) has little history.”

Map #1. CHJV Areas



Maps #2. Changes to AppLCC (ex. KY)



Maps #3. Changes Eastern Region/AppLCC

